

Falstaff

A lyric opera in three acts by Giuseppe Verdi

Libretto by Arrigo Boito, after the comedy *The Merry Wives of Windsor* by William Shakespeare

First performed: Festival 2009



Tristram Kenton

CREATIVE TEAM

Director Richard Jones

Designer Ultz

Lighting Designer Mimi Jordan Sherin

Movement Director Linda Dobell

CHORUS BREAKDOWN

10 Tenors
10 Basses
10 Sopranos
10 Mezzos
3 Actors (1 female, 1 male, 1 boy)
2 Supers (1 female, 1 male)
11 Children (6 boys, 3 girls)

TECHNICAL PERSONNEL

16 Stage Crew
3 Flymen
6 Stage Managers
5 Lighting Crew
1 Follow Spots
8 Running Wigs
6 Make-Up
2 Running Wardrobe
6 Dressers

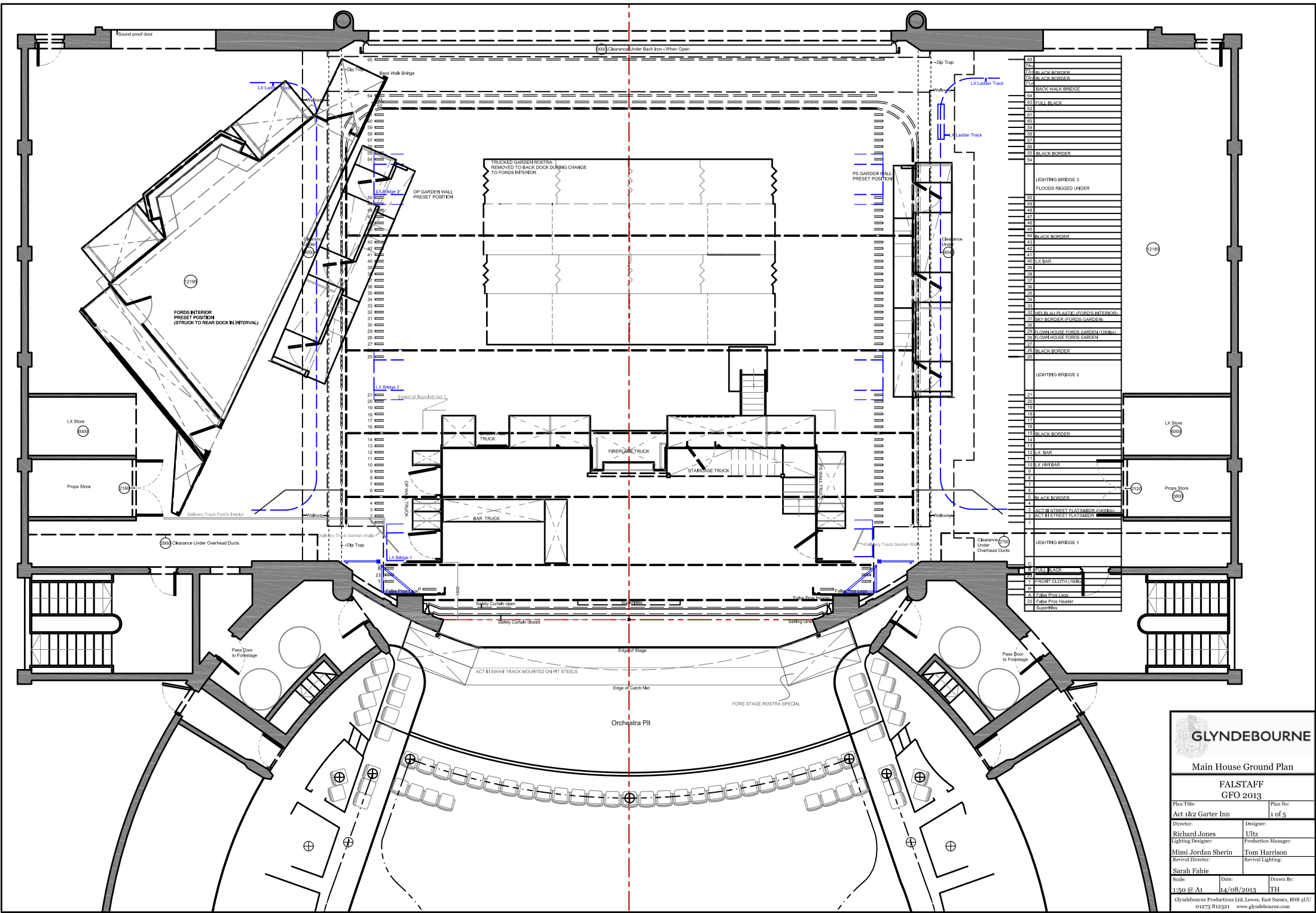
SPECIAL EFFECTS

Smoke
Sounds Effects
Prosthetics

TRANSPORT

6 High Cube Containers or
6 Megacube Trailers (approximately)





GLYNDEBOURNE

Main House Ground Plan

FALSTAFF

GFO 2013

Plan Title:
Act 1&2 Garter Inn

Plan No:
1 of 5

Director:
Richard Jones

Lighting Designer:
Mimi Jordan Sherin

Revised Director:
Sarah Fahie

Designer:
Uitz

Production Manager:
Tom Harrison

Revised Lighting:
Superfiles

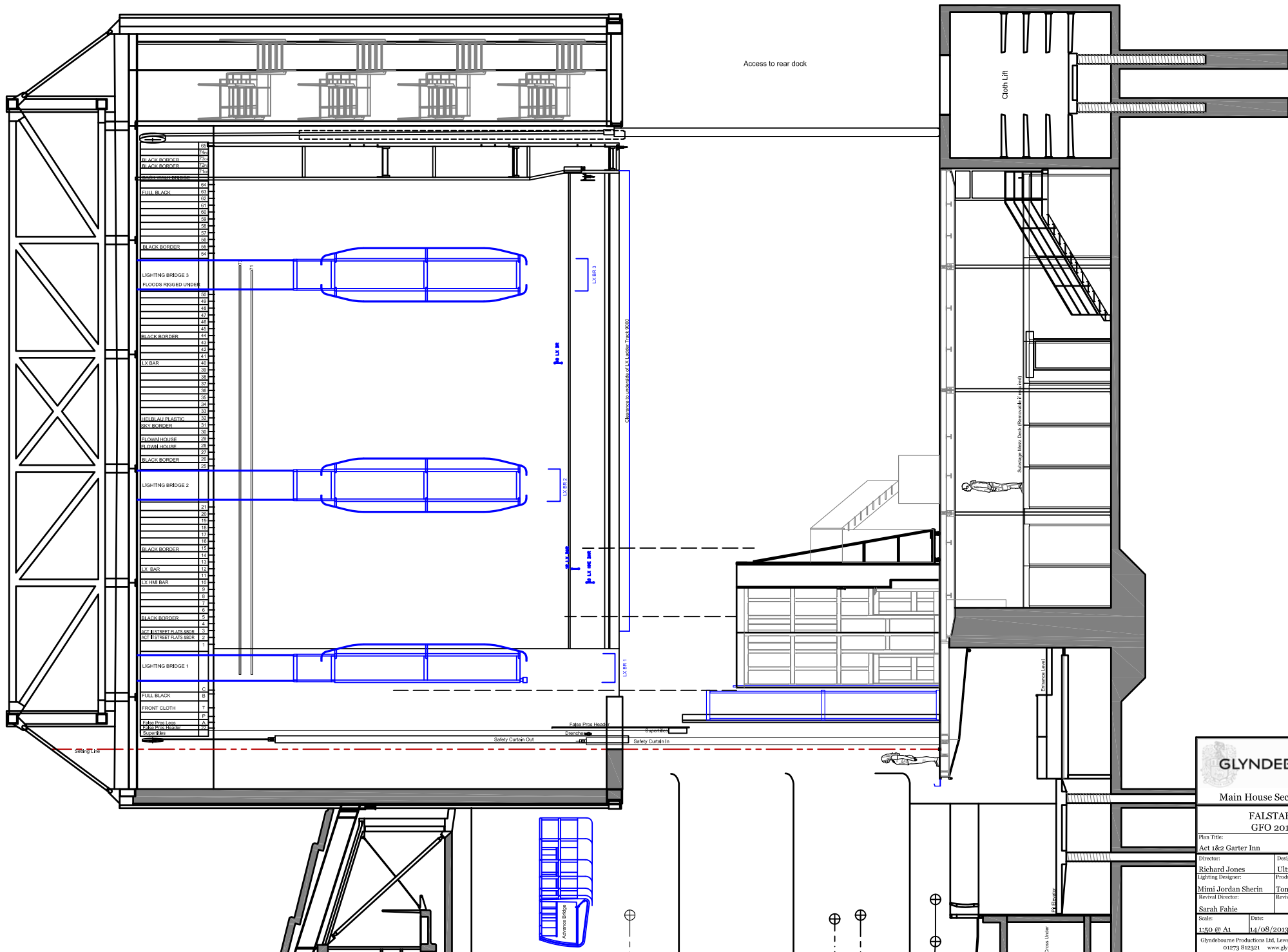
Scale:
1:50 @ A1

Date:
14/08/2013

Drawn By:
JTH

Glyndebourne Productions Ltd, Lewes, East Sussex, BN8 5UU

01273 812321 www.glyndebourne.com

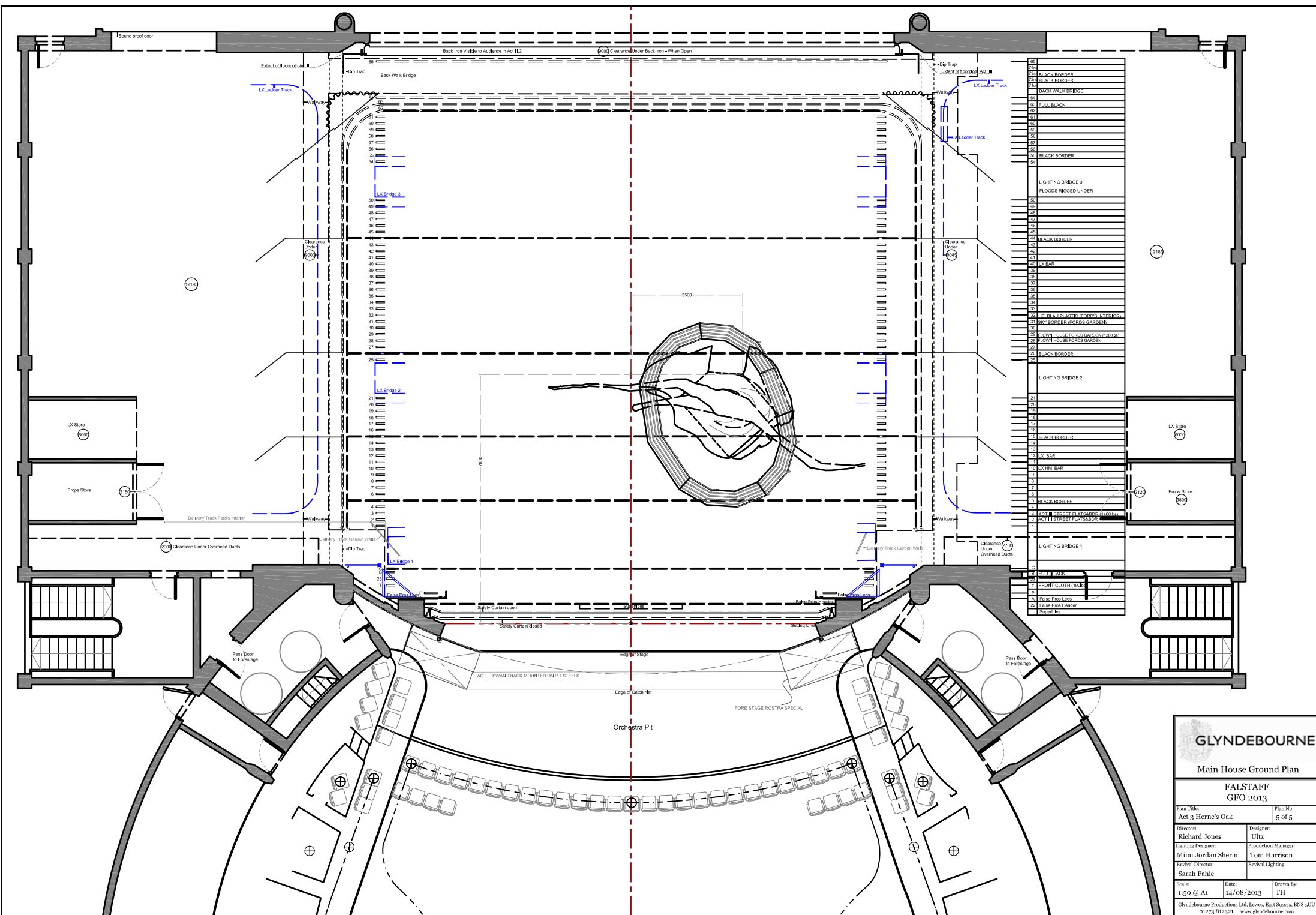


GLYNDEBOURNE

Main House Section

FALSTAFF
GFO 2013

Plan Title:	Act 1&2 Garter Inn	Plan No:	1 of 5
Director:	Richard Jones	Designer:	Utz
Lighting Designer:	Mimi Jordan Sherin	Production Manager:	Tom Harrison
Revel Director:	Sarah Fahie	Revel Lighting:	
Scale:	1:50 @ A1	Date:	14/08/2013
Drawn By:	ITH		
GlynDeBourne Productions Ltd, Lewes, East Sussex, BN8 5UU 01273 812321 www.glynDeBourne.com			



GLYNDEBOURNE

Main House Ground Plan

Act 3 Herne's Oak

FALSTAFF

GFO 2013

Plan Title:

Act 3 Herne's Oak

Plan No:

5 of 5

Director:

Richard Jones

Designer:

Utz

Lighting Designer:

Mimi Jordan Sherin

Production Manager:

Tom Harrison

Revival Director:

Sarah Fahie

Revival Lighting:

Scale:

1:50 @ A1

Date:

14/08/2013

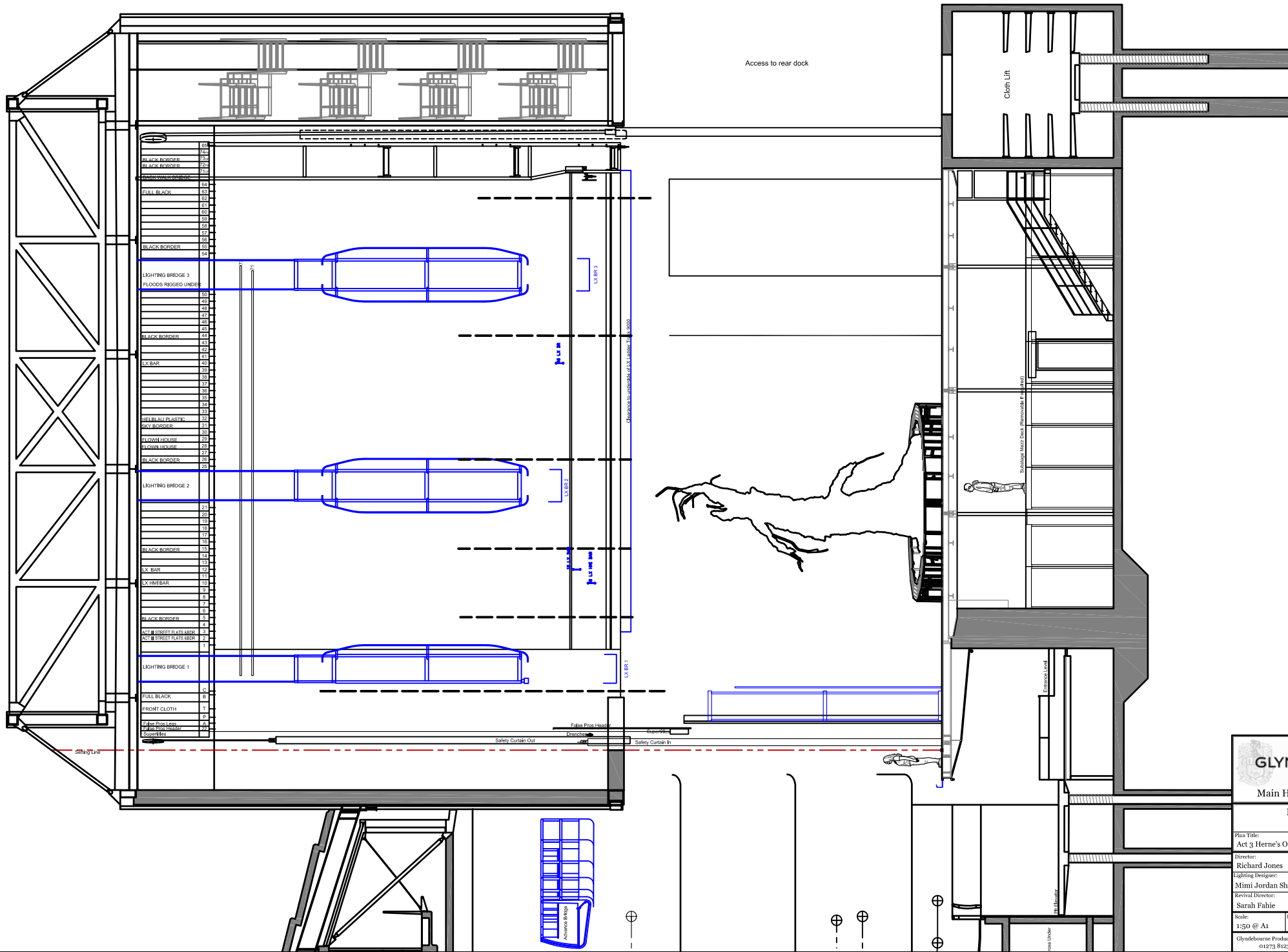
Drawn By:


TH

Glyndebourn Productions Ltd, Lewes, East Sussex, BN8 5UU

01273 812321

www.glyndebourn.com



**GLYNDEBOURNE**

Main House Section

FALSTAFF
GFO 2013

Plan Title: Act 3 Herne's Oak	Plan No: 5 of 5	
Director: Richard Jones	Designer: Uitz	
Lighting Designer: Mimi Jordan Sherin	Production Manager: Tom Harrison	
Revival Director: Sarah Fahie	Revival Lighting:	
Scale: 1:50 @ A1	Date: 14/08/2013	Drawn By: TH

Glyndebourne Productions Ltd, Lewes, East Sussex, BN8 9UU

01273 812321 www.glyndebourne.com